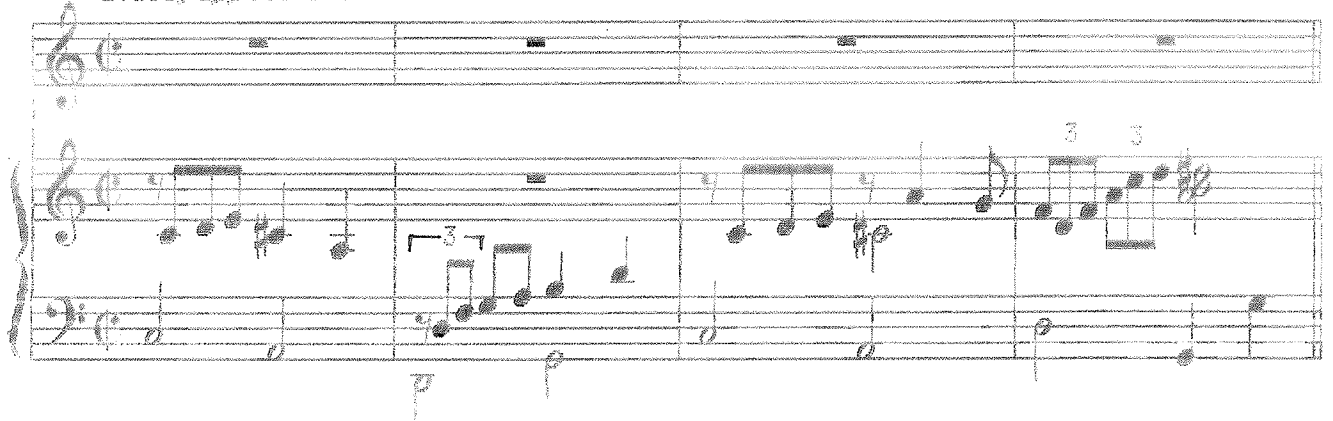


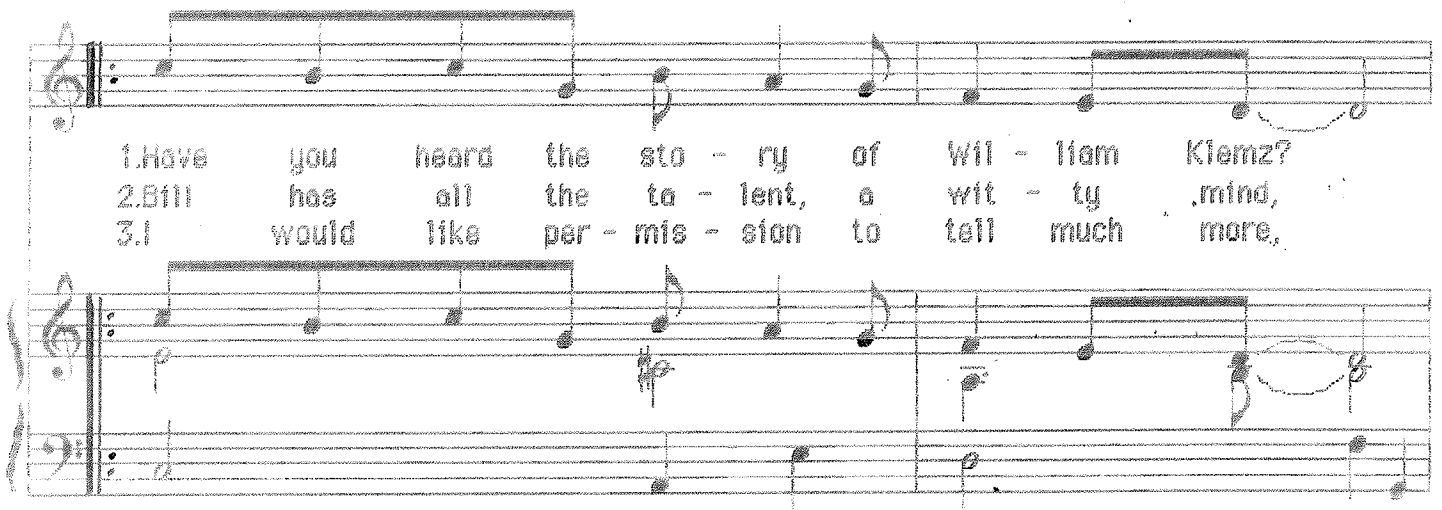
# THE BALLAD OF WILLIAM KLEMZ

By Richard Hillert

*Allegro, appassionato*

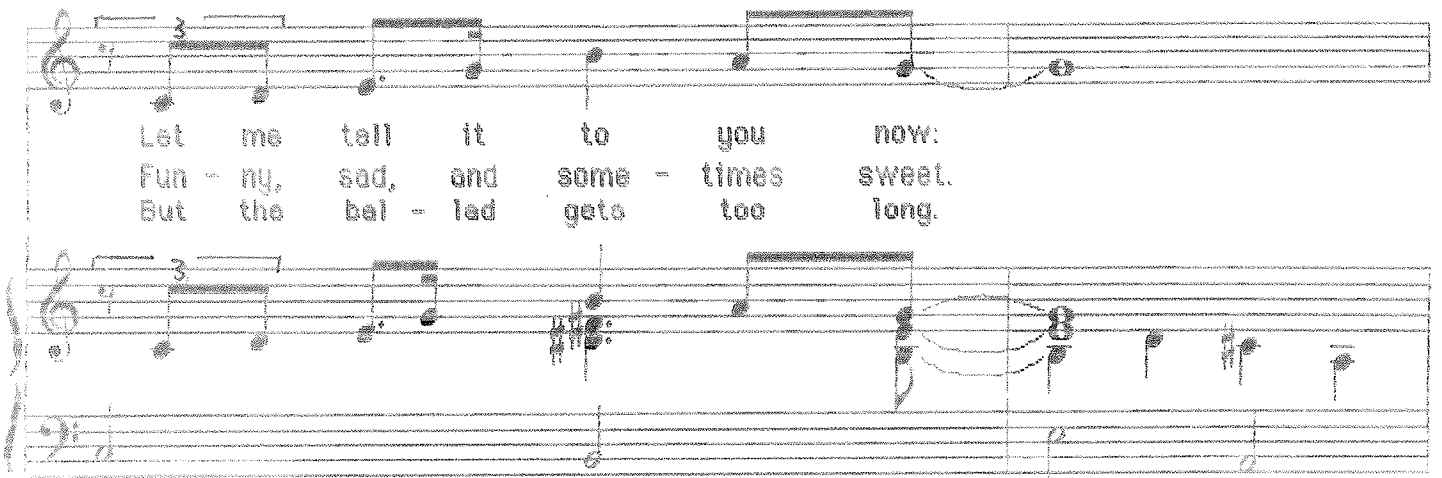


Piano introduction musical notation. It consists of a grand staff with treble and bass clefs. The melody is in the right hand, starting with a treble clef and a key signature of one flat. The bass line is in the left hand. There are triplets in the right hand and a triplet in the left hand. The piece ends with a double bar line.



1. Have you heard the sto - ry of Wil - liam Klemz?  
2. Bill has all the ta - lent, a wit - ty mind,  
3. I would like per - mis - sion to tell much more,

Vocal line and piano accompaniment for the first verse. The vocal line is in the treble clef, and the piano accompaniment is in the grand staff. The lyrics are written below the vocal line.



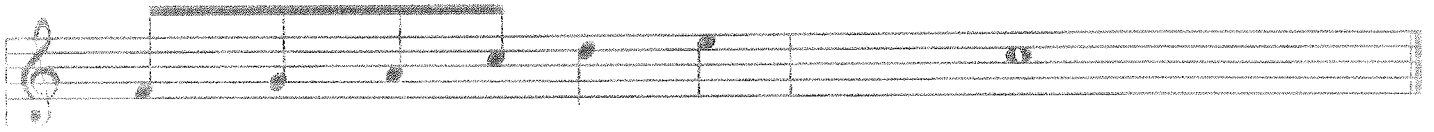
Let me tell it to you now:  
Fun - ny, sad, and some - times sweet.  
But the bal - led gets too long.

Vocal line and piano accompaniment for the second verse. The vocal line is in the treble clef, and the piano accompaniment is in the grand staff. The lyrics are written below the vocal line.

With his friend - ly smile... Give him just a while...  
 An - y co - te - gor - y Makes a fun - ny sto - ry,  
 There might be some blun - ders, Tell - ing all the won - ders

He'll be - guile... you some - how.  
 He can spin it out com - plete.  
 To in - clude in Wil - liam's

song.



That's the song of Wil - liam Klemz.

