

# Of the Father's Love Begotten

Walter L. Pelz

*Espressivo - in chant style*

Oboe

*p*

*f* *p*

Oboe

*pp*

T.  
B.

*p* *Espressivo*

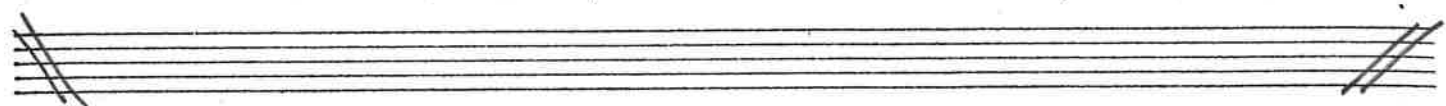
1. Of the Fa-ther's love be-got - ten Ere the

Organ

*pp*  
*no ped.*

world's be-gan to be, He is Al-pha and O-me - ga, He the source, the

end - ing he, Of the things that are, that have been



And that fu-ture years shall see, Ev-er-more and ev-er-more

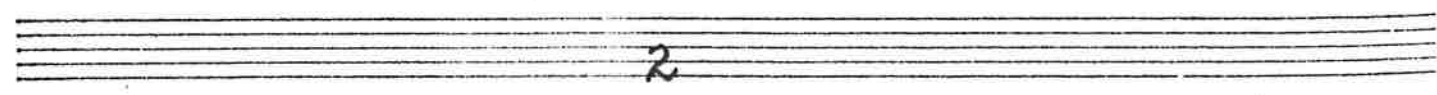
Ped. 8'

oboe

S.  
A.

2. O that birth for-ev-er bless-ed,

Organ

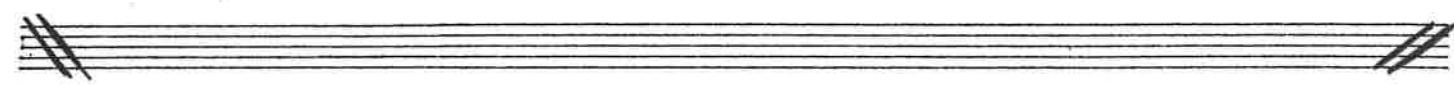


oboe

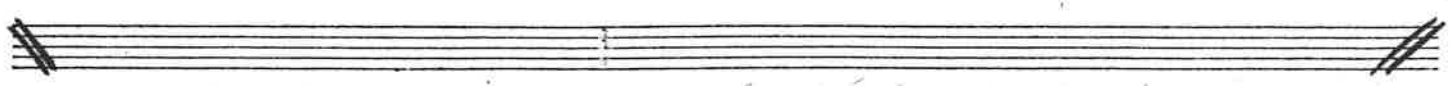
S.  
A.

When the Vir-gin, full of grace, By the Ho-ly Ghost con- ceiv - ing, Bare the

Organ



Sav-iour of our race; And the Babe, the world's Re - deem - er



First re - vealed his sac - red face, Ev - er - more and ev - er - more.

Oboe

Bells

S.

A.

T.

B.

Organ

*p* *mp* *mf* *mf*

This is he whom seers in old time

Chanted of with one ac-

This is he whom seers in old time

chanted of with one ac-

\* let ring

Bells

S.

A.

T.

B.

Whom the voic-es of the pro-phets

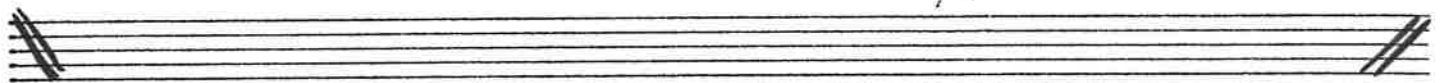
cord; Pro-mised in their

Whom the voic-es of the pro-phets

cord; Pro-mised in their

4

Handwritten musical score for the first system. It consists of five staves. The top staff is a grand staff with treble and bass clefs. The second and third staves are vocal lines in treble clef. The fourth and fifth staves are piano accompaniment in bass clef. The key signature is one sharp (F#), and the time signature is 8/8. The lyrics are: "faith - ful words; Now he shines, the long ex - pect ed;". There are asterisks above the first and last measures of the piano part, and a circled 'C' above the first measure of the vocal part.



Handwritten musical score for the second system. It consists of five staves. The top staff is a grand staff with treble and bass clefs. The second and third staves are vocal lines in treble clef. The fourth and fifth staves are piano accompaniment in bass clef. The key signature is one sharp (F#), and the time signature is 8/8. The lyrics are: "Let cre - a - tion praise its Lord, Ev - er - more and ev - er - more;". There are asterisks above the first and last measures of the piano part, and a circled 'C' above the first measure of the vocal part.

Bells

S. *f* 4. O ye heights of heav'n, a-dore him; 'An-gel hosts, his prais-es

A. *f* 4. O heights a-dore him An-gel hosts prais-es

T. *f* 4. O ye heights a - dore him, An-gel hosts prais-es

B. *f* 4. O ye heights a - dore him An-gel hosts prais-es

8 sing; Powers, do-min-ions, bow be-fore him, 'And ex-tol our God and King;

8 sing; Powers, do-min-ions, bow be-fore him, 'And ex-tol our God and King;

8 sing; Powers, do-min-ions, bow be-fore him, 'And ex-tol God and King;

8 sing Powers, do-min-ions, bow be-fore him, 'And ex-tol God and King;

Let no tongue on earth be si — lent, 'Ev-ery voice in con-cert ring,

Let no tongue on earth be si — lent, 'Ev-ery voice in con-cert ring,

Let no tongue on earth be si — lent, 'Ev-ery voice in con-cert ring,

Let no tongue on earth be si — lent, 'Ev-ery voice in con-cert ring,

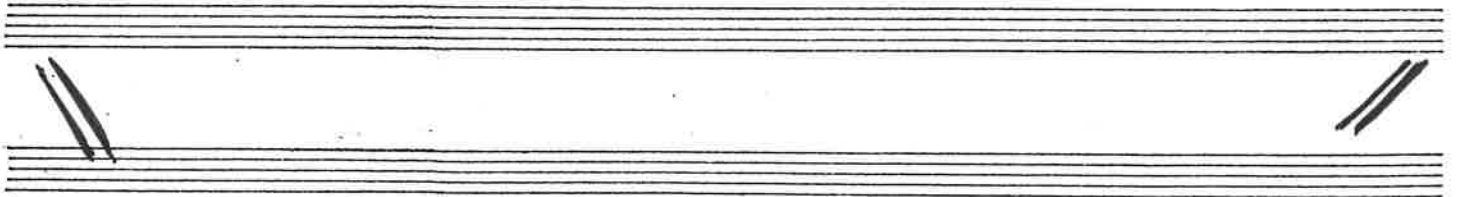
6

S. Ev - er - more and ev - er - more.

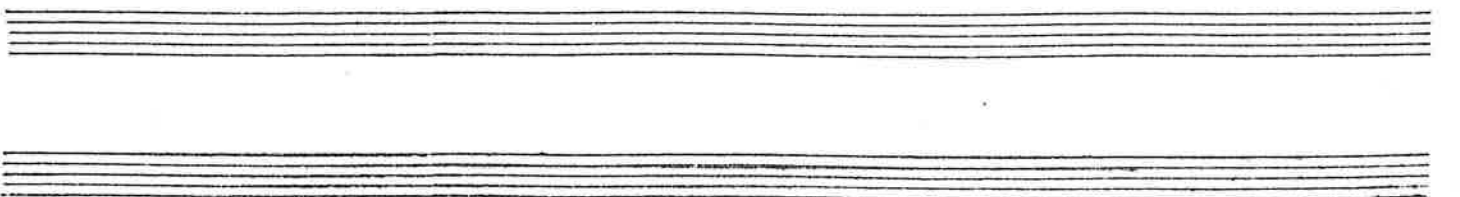
A. Er - er - more and ev - er - more.

T. Ev - er - more and ev - er - more.

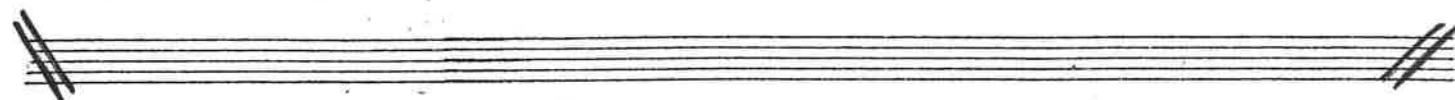
B. Ev - er - more and ev - er - more.



*cresc.*

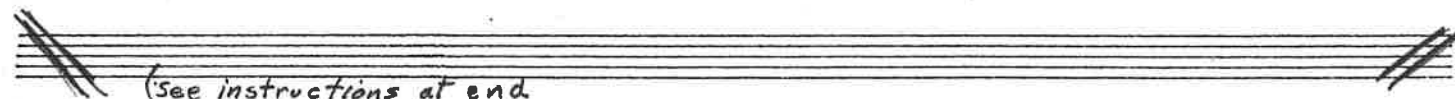


Piano accompaniment for the first system, featuring treble and bass staves with chords and melodic lines.



*molto crescendo*

Piano accompaniment for the second system, including the instruction "molto crescendo".



(see instructions at end of composition)

\*\* Broadly

Bells

(few sop.) *ff*

Descant

To thee with God the Fa - ther And Ho - ly Ghost to thee

*ff*

Choir

Christ, to thee, with God the Fa - ther, And, O Ho - ly Ghost, to thee,

*ff*

Organ

Broadly



Hymn and chant and high thanks-giv - ing, And un-wear-ied prais-es be

Hymn and chant and high thanks-giv - ing, And un-wear-ied prais-es be:

The first system consists of five staves. The top staff is a vocal line with lyrics. The second staff is another vocal line with lyrics. The third and fourth staves are piano accompaniment, and the fifth staff is a bass line. The key signature has two flats (B-flat and E-flat), and the time signature is 4/4. A double bar line is present after the first measure of the vocal lines.

Hon- or, glo - ry, and do - min - ion, And e - ter - nal vic - to - ry,

Hon - or, glo - ry, and do - min - ion, And e - ter - nal vic - to - ry,

The second system consists of five staves. The top staff is a vocal line with lyrics. The second staff is another vocal line with lyrics. The third and fourth staves are piano accompaniment, and the fifth staff is a bass line. The key signature has two flats (B-flat and E-flat), and the time signature is 4/4. A double bar line is present after the first measure of the vocal lines.

Handwritten musical score for choir and organ. The score is in B-flat major (two flats) and 4/4 time. It features five staves: a vocal line, a piano line, and three bell lines. The tempo is marked "a // largando" and the dynamics are "fff". The lyrics are "Ev - er - more and ev - er - more." The piano part provides harmonic support with chords and a bass line. The bell lines are mostly rests, indicating when each bell should enter.

\*\*

- 1- Each bell enters at the assigned phrase.
- 2- Once a bell enters, it is heard in each succeeding phrase
- 3- Each bell is rung a minimum of 2 times per phrase, at any place within the phrase
- 4- The dynamic levels should match those of the choir + organ.
- 5- After the choir + organ release the final chord, let the bells continue to vibrate for a few seconds before the final damp.