

Shirley

Werde Mutter

Carlson

Allarghetto.

Musical staff with treble clef, containing a series of eighth notes and quarter notes.

Musical staff with bass clef, containing a series of quarter notes and half notes.

Two empty musical staves.

Musical staff with treble clef, containing a series of eighth notes and quarter notes.

Musical staff with bass clef, containing a series of quarter notes and half notes.

Two empty musical staves.

Musical staff with treble clef, containing a series of eighth notes and quarter notes.

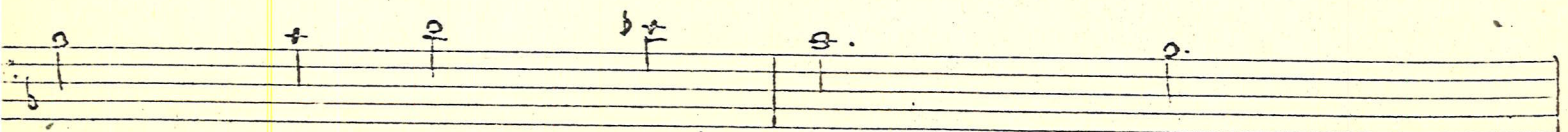
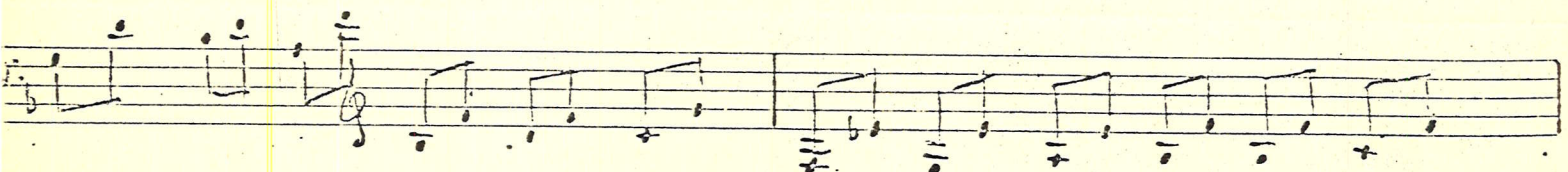
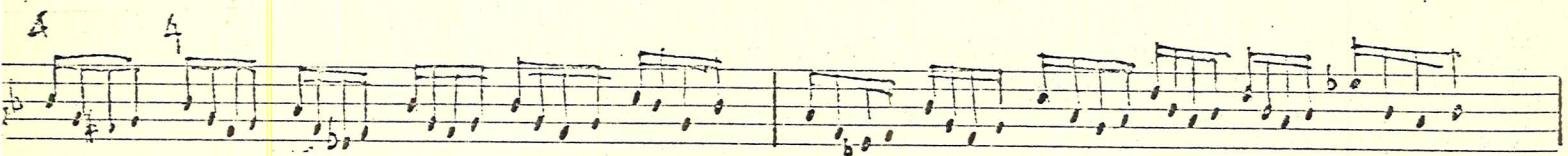
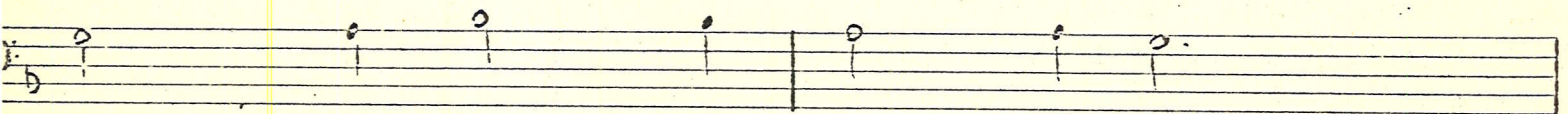
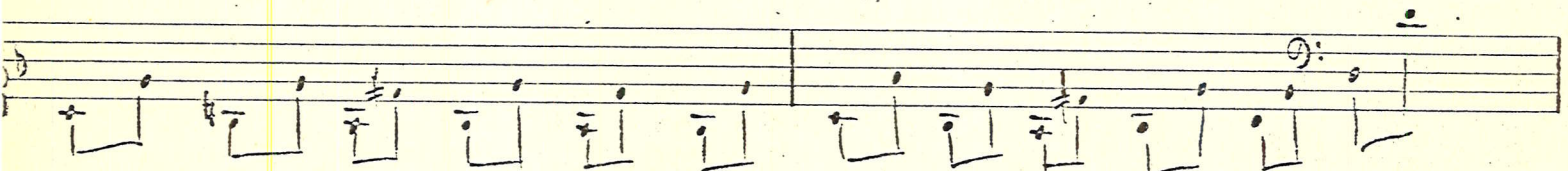
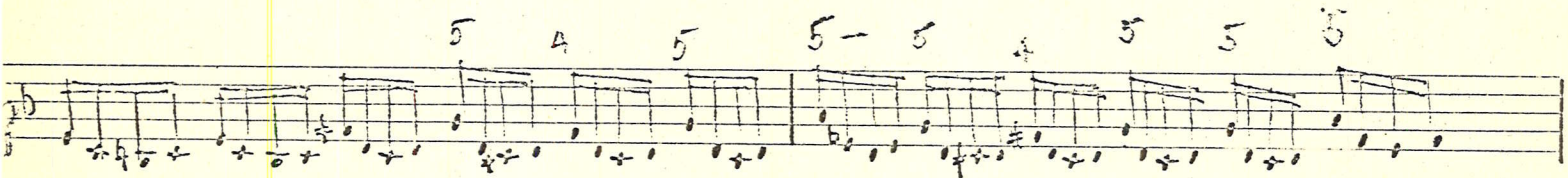
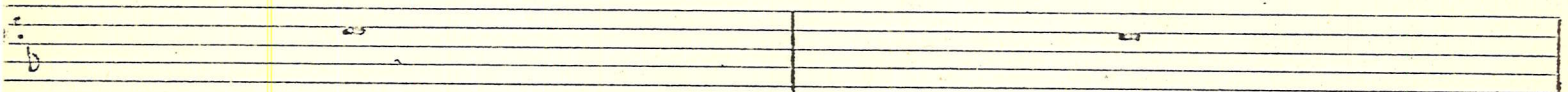
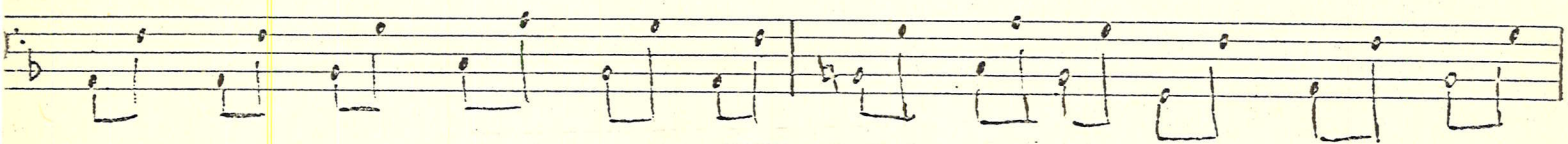
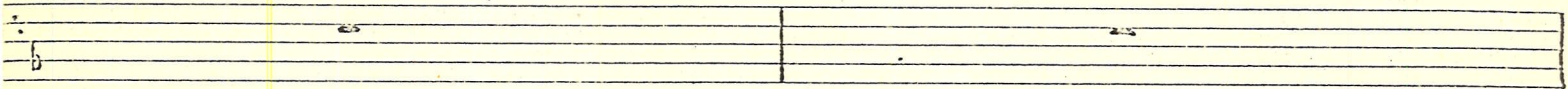
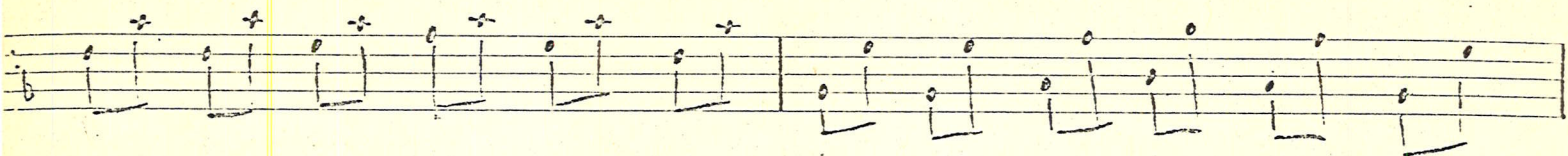
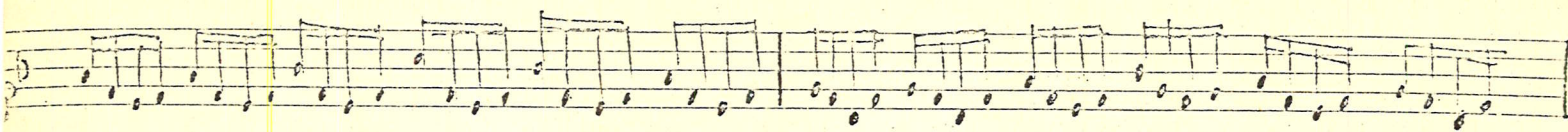
Musical staff with bass clef, containing a series of quarter notes and half notes.

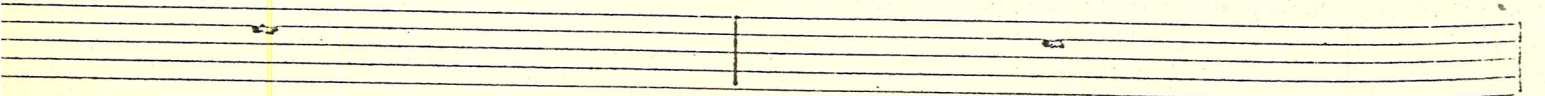
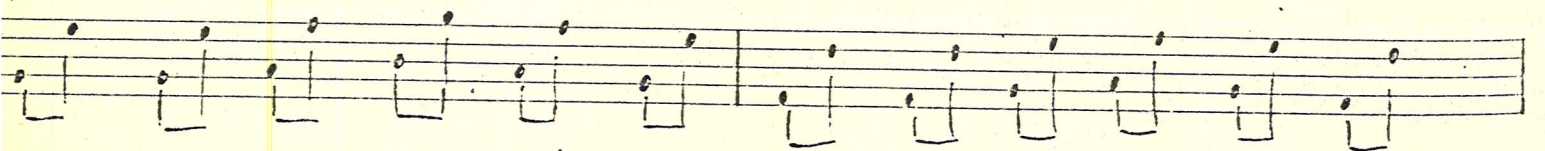
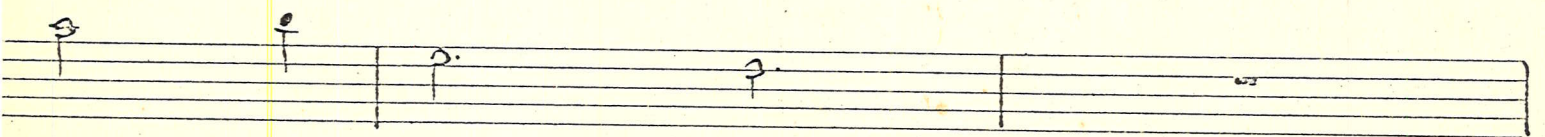
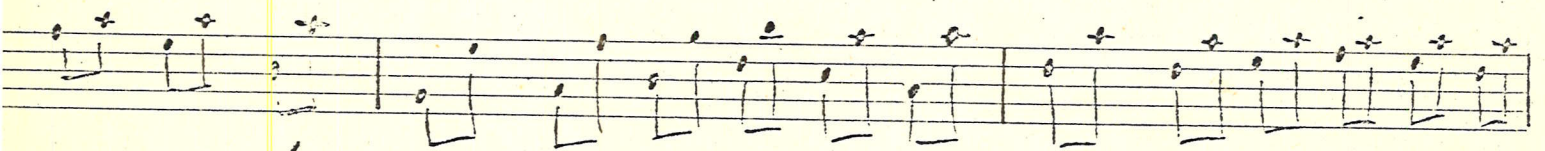
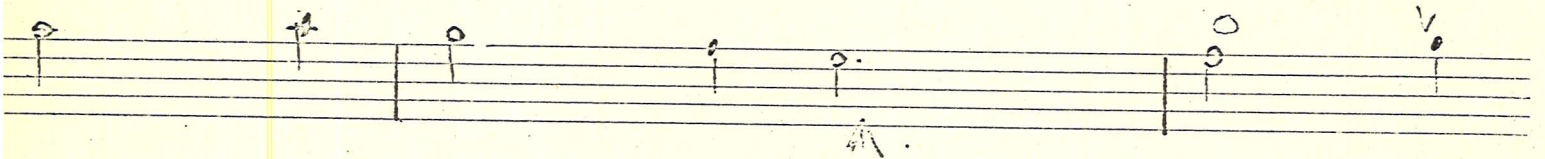
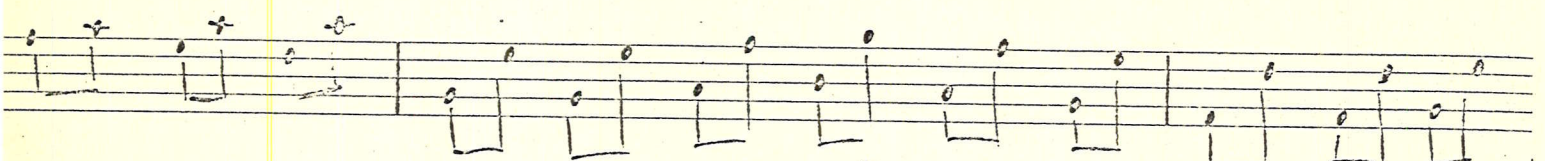
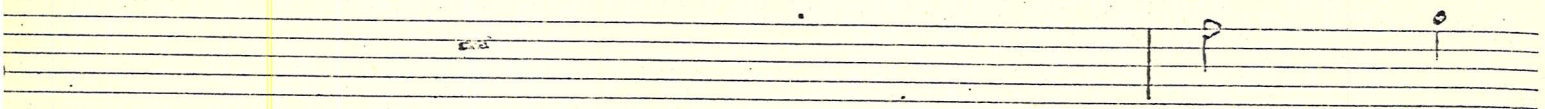
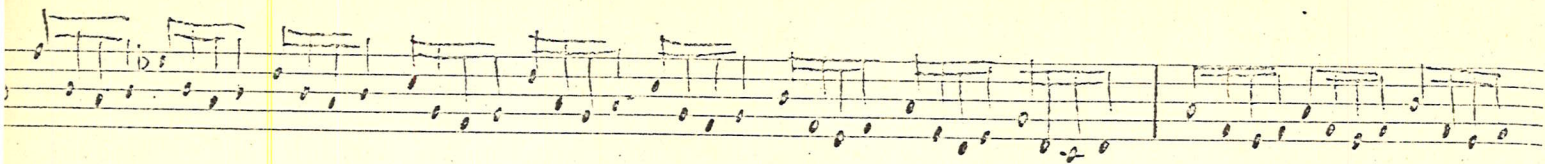
Musical staff with bass clef, containing a series of quarter notes and half notes.

Musical staff with treble clef, containing a series of eighth notes and quarter notes.

Musical staff with bass clef, containing a series of quarter notes and half notes.

Musical staff with bass clef, containing a series of quarter notes and half notes.





Handwritten musical notation on three staves. The top staff contains a melodic line with eighth and sixteenth notes. The middle staff contains a bass line with chords. The bottom staff is mostly empty with a few notes. There are some handwritten annotations and a signature "L.H. 207, v. 1" on the right side of the first two staves.

L.H. 207, v. 1